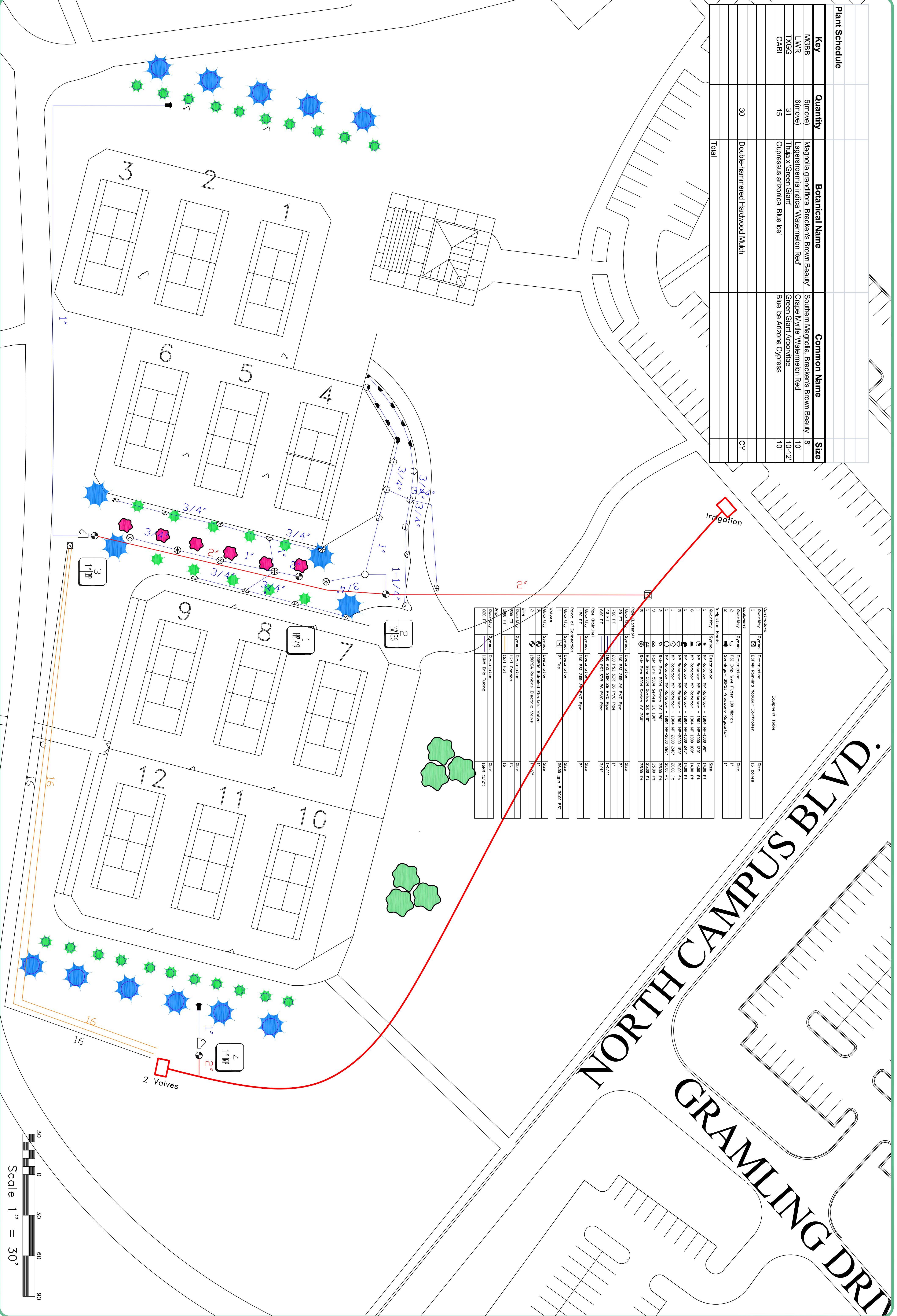


Plant Schedule				
Key	Quantity	Botanical Name	Common Name	Size
MGBB	6(rotate)	Magnolia grandiflora 'Brocken's Brown Beauty'	Southern Magnolia, Brocken's Brown Beauty	8'
LWBR	6(rotate)	Lagerstroemia indica 'Watermelon Red'	Crape Myrtle, Watermelon Red	10'
TYGG	31	Thuja x Green Giant	Green Giant Arborvitae	10-12'
CABI	15	Cupressus arizonica 'Blue Ice'	Blue Ice Arizona Cypress	10'
	30	Double-hammered Hardwood Mulch		CV
		Total		



Equipment Table		
Quantity	Symbol Description	Size
1	ESPAH Rainbird Monitor Controller	16 zones
2	PSI Pipe Valve Filter 100 Micron	1"
2	Serringer 30PSI Pressure Regulator	1"
Irrigation Heads		
Quantity	Symbol Description	Size
1	HP Rotator HP Rotator - 1804 HP-2000 24"	14400 FT
1	HP Rotator HP Rotator - 1804 HP-1000 24"	14400 FT
6	HP Rotator HP Rotator - 1804 HP-1000 180"	14400 FT
1	HP Rotator HP Rotator - 1804 HP-1000 24"	14400 FT
3	HP Rotator HP Rotator - 1804 HP-2000 24"	20000 FT
1	HP Rotator HP Rotator - 1804 HP-2000 24"	20000 FT
2	HP Rotator HP Rotator - 1804 HP-2000 300"	20000 FT
2	HP Rotator HP Rotator - 1804 HP-2000 300"	20000 FT
1	Rain Bird S104 Sprinkler 30 180"	32000 FT
1	Rain Bird S104 Sprinkler 30 180"	32000 FT
3	Rain Bird S104 Sprinkler 63 360"	32000 FT
Pipe (Linear)		
Quantity	Symbol Description	Size
28 FT	160 PSI SDR 26 PVC Pipe	2"
48 FT	160 PSI SDR 26 PVC Pipe	1-1/4"
660 FT	160 PSI SDR 26 PVC Pipe	3/4"
1800 FT	160 PSI SDR 26 PVC Pipe	1/2"
Point of Connection		
Quantity	Symbol Description	Size
420 FT	160 PSI SDR 26 PVC Pipe	2"
Valves		
Quantity	Symbol Description	Size
2	ESPAH Rainbird Monitor Controller	16 zones
2	PSI Pipe Valve Filter 100 Micron	1"
2	Serringer 30PSI Pressure Regulator	1"
Plant		
Quantity	Symbol Description	Size
6	Magnolia grandiflora 'Brocken's Brown Beauty'	8'
6	Lagerstroemia indica 'Watermelon Red'	10'
31	Thuja x Green Giant	10-12'
15	Cupressus arizonica 'Blue Ice'	10'
30	Double-hammered Hardwood Mulch	CV

CAD FILE:
 DRAWN BY:
 CHECKED BY:
 DATE STARTED:
 DATE FINISHED:
 PAGE #: 1
 TOTAL OF 1

**USC UPSTATE LANDSCAPING
 ATHLETICS - CP00362341**

W.P. LAW
 INCORPORATED
 2400 HWY 101 SOUTH GREEN, SC 29651
 (864)879-1045 FAX (864)879-1046

